



Who we are and what we do...

Cornerstone Spatial Design and Production, Inc. is a full service exhibit company specializing in museum interpretive exhibits and visitor centers. Founded in 1986 by Bill May and Ellen Katz, Cornerstone is highly regarded in the industry for its attention to quality and detail as well as its ability to complete projects on time and on budget.

Our team will work *with you* to bring your vision to reality—whether it be from your concept designs or final bid-ready documents. We have collaborated successfully with planners, designers, architects, curators, and building trades.

We are confident in our ability to tackle any project regardless of size or complexity—from simple panel exhibits—refurbishing and/or updating your existing exhibits to creating complete visitor centers and museums.

Our clients include...



Museums

Cornerstone has a proven track-record creating permanent museum exhibits that stand the test of time—everything from collection-based exhibitions to full scale environments.



National Parks

Cornerstone has a successful on-going relationship with the National Park Service and has been awarded consecutive indefinite quantity contracts since 1987.



State and Local Parks

Cornerstone designs and builds a wide range of projects for the states of New York, New Jersey and Pennsylvania.

Environmental/Nature Centers

Cornerstone creates hands-on exhibits for both adults and children that open their eyes to the world around them.



Private Institutions

From signage and exhibitions to permanent installations, Cornerstone produces exhibits that celebrate these institutions.



Historical Societies

Cornerstone meets the interpretive challenge of these organizations with exhibits that bring history to life.





What we can do for you...

At Cornerstone, we listen and respond to the individual needs of each client—we have repeat and on-going relationships with many of them. In addition to seeing a project through all phases of fabrication through installation, we remain available to provide the on-going services of refurbishment, maintenance and updating.



Here is a sampling of what we offer...



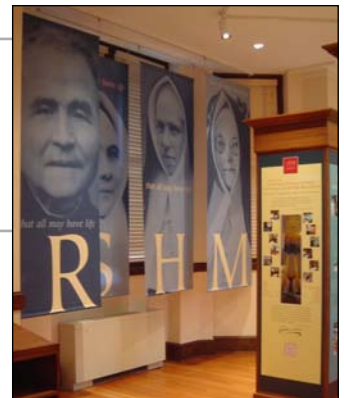
museum services

Design consultation... detailing... updating... refurbishment. We can provide our services in phases—as your schedule and budget allow.

environments

Full-scale environments bring your story to life and remain in your visitors memory.

large scale graphics From photographic and digital sources.



artifact mounts and cases

Extensive experience in the handling, mounting and creation of artifact mounts and the fabrication of environmentally-controlled cases.



interactive exhibits

From initial engineering to final production we produce both simple and technically complex interactive elements for exhibits.



3D maps and models

We create a variety of three-dimensional solutions.



signage/waysides

Urban settings to nature trails, we design and build outdoor signage that stands up to the elements.





Our facility and services...

Cornerstone Spatial Design and Production, Inc. offers the services of a small and well-established team of cabinet makers and designers. Located in northern New Jersey, clients find us easily accessible to the transportation systems, goods and services of the metropolitan New York area. Our facility includes:

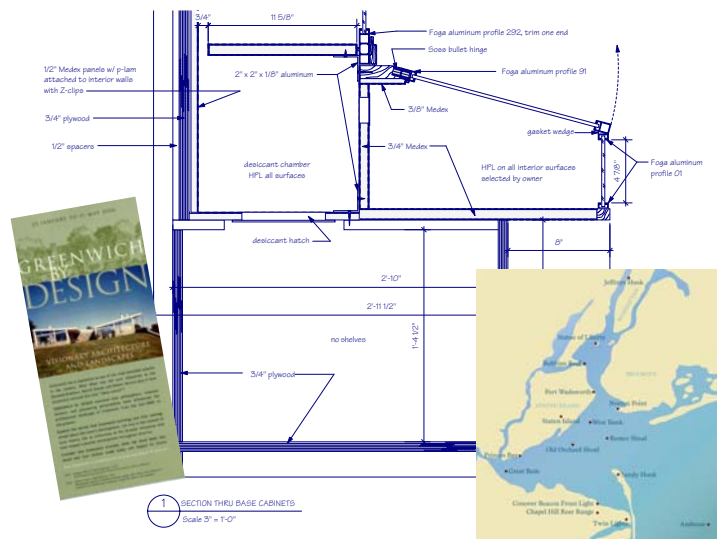


Fabrication Department

- woodworking – custom pieces, multiple runs, all types of cabinetry
- metal working – fabricating and finishing, aluminum and steel
- acrylic fabrication, including artifact cases
- artifact mount design and fabrication
- prototype development – engineering through production
- interactive development and production including relief models, fiber optics, etc.
- fiber optic case lighting design and installation
- complete spray booth facility for application of all types of paints and finishes
- service extending through to total exhibit installation
- a team of proven subcontractors for services including photo processing, audio visual, etc.

Graphic Production Studio

- design of overall exhibits and interpretive graphics
- preparation of all digital files, in-house scanning
- in-house screen making and printing
- generation of custom illustrations, computer interactive graphics
- design of collateral and promotional material
- complete knowledge of service bureau imaging to various output systems
- drafting and detailing – generating all appropriate construction drawings
- preparation of bid package documentation



At the Keepers Quarters exhibits at the Sandy Hook Lighthouse, NJ, an interactive map with sequentially lit graphics shows how mariners navigate at night.



This fire safety center encourages children to learn about fire safety. Cornerstone has built these in red and yellow, customized to include the town's name and insignia.



interactive exhibits

From initial engineering and prototyping to final production, high or low tech, Cornerstone builds both simple and sophisticated interactive exhibits.



Audiovisual, computer and electronic elements at the John Brown Museum, WV.



Children can build a barn and fill it with animals at the Wortendyke Barn, NJ.



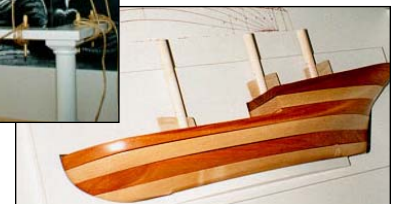
The Intrepid needed an interactive model of the first submarine with moving cranks, propellers, rudders and augers. Cornerstone also produced computer interactives for this exhibition.



Lift-up panels, turning graphic drums, a touch table and an interactive food web engage young visitors at the Environmental Center at Liberty State Park, NJ.



Visitors can hoist a sail or build a boat at the Polish Club exhibit at Salem Maritime National Park, MA.



museums

Cornerstone has a proven track-record creating, maintaining and upgrading permanent museum exhibits that stand the test of time – everything from collection-based exhibitions to full scale environments.

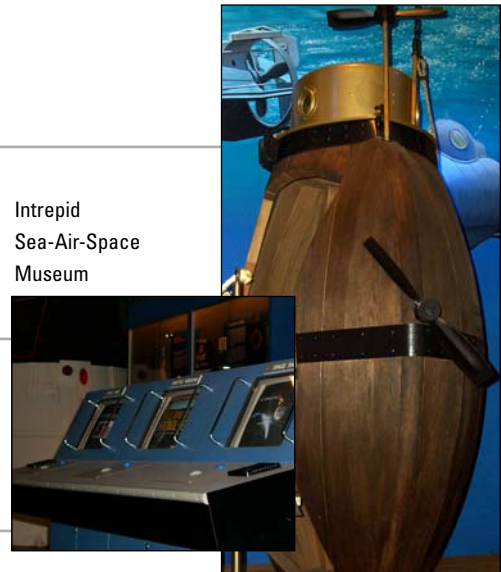
Erie Maritime Museum, Erie, PA



Somerset
Historical Center,
Somerset, PA



Intrepid
Sea-Air-Space
Museum



Ongoing New York museums include:

- Ellis Island Immigration Museum
- Statue of Liberty National Monument
- Intrepid Sea-Air-Space Museum



Cornerstone has fabricated and installed a wide variety of signs at Ellis Island.

signs and waysides

Interior signage and wayfinding maps, urban settings and nature trails, we design and build signage that can stand up to the elements.



Panels of fiberglass embedments mounted in stained wooden frames enhance the historic site at the Wortendyke Barn, NJ.



Campus-wide signage of powder-coated aluminum, solid phenolic resin and silk-screened banners at Lafayette College, Easton, PA.

Interpretive signs with digitally-output phenolic panels in metal frames at Delaware & Raritan Canal State Park, NJ.



Graphic standards and colors were developed for the outdoor interpretive signage at state parks throughout New Jersey.

Spectacular large-scale graphics and replica rocks at the South Rim Visitor Center at Black Canyon of the Gunnison National Park



Cornerstone has built a wide variety of exhibits that interpret the natural environment—utilizing photography, drawings, real and replica plants, animals and other natural specimens.



Tyler Bend Visitor Center, Buffalo River NR



Pine Springs VC, Guadalupe Mountains NP

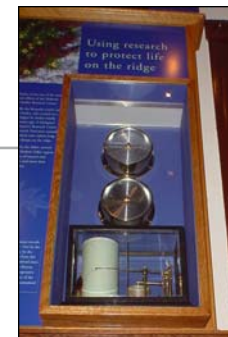


Canyonlands Visitor Center, Utah

natural history exhibits



We have created exhibits incorporating topographic maps and a variety of interactive elements that appeal to audiences of all ages.



Interactive exhibits at the Polish Club, Salem Maritime NHP, MA



Cornerstone built exhibits at two locations in the New Bedford Whaling NHP, MA



maritime exhibits

Cornerstone has been called upon to create a variety of nautical exhibits—creating full-size ship sections and interactive exhibits.



A full-size section of the USS *Constitution* at the Naval Live Oaks Visitor Center, Gulf Island National Seashore, FL



Visitors can explore the first submarine, the *Turtle*, at the Intrepid Sea-Air-Space Museum, NYC



The exhibits at the Sandy Hook Lighthouse Keepers Quarters, NJ combine graphics, models and interactive elements.



Exhibits at the Erie Maritime Museum, PA include a full-size replica of the Brig *Niagara* shown during construction (above) and "after the battle" (right).



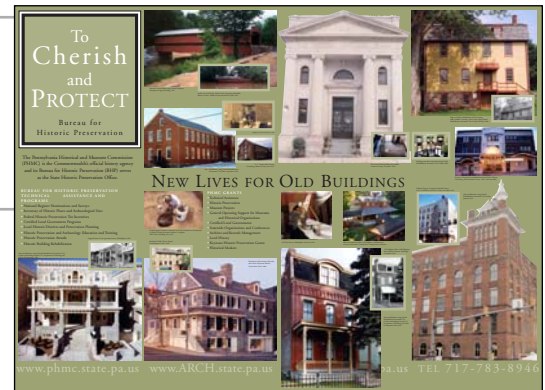
"Life Reborn," a traveling exhibit built for the United States Holocaust Memorial Museum. The flexible wall system has since been reused for other exhibits.



traveling exhibits

Cornerstone has fabricated simple graphic panel exhibits that are easily installed on site.

Cornerstone has met the special challenges of creating traveling exhibits—whether it be simple panels to complex displays—everything from engineering the exhibits to the design of shipping cases.



Working to an established budget, this exhibit for the Library of Congress included many artifacts. Starting on the West Coast, it traveled across the country over the course of three years, ending up in Washington, DC.

We have created exhibits that easily dismantle and fit into a single case to be carried and set up by one person.



"Life in Shadows" combines small- and large-scale graphics with artifacts in a modular traveling exhibit.



"Nazi Olympics," an exhibit produced for the United States Holocaust Memorial Museum has surpassed its original travel life. We engineered and built all of the exhibit elements, as well as the reusable shipping crates.

